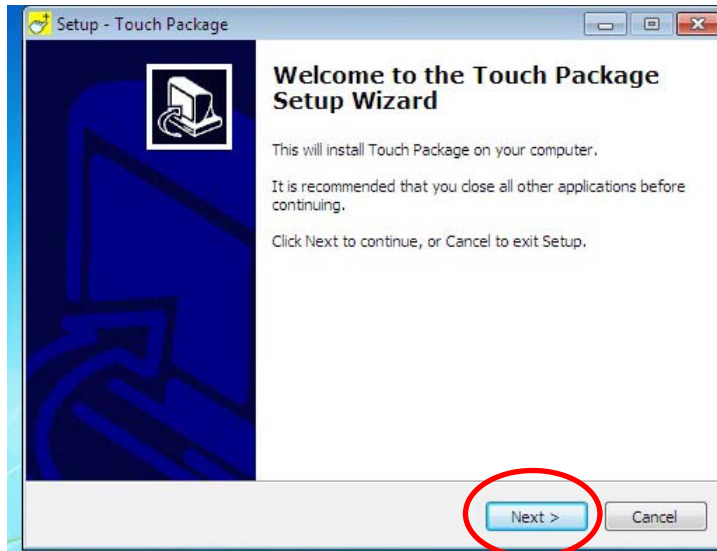


# TOUCH SETUP

1. Double click “setup.exe”

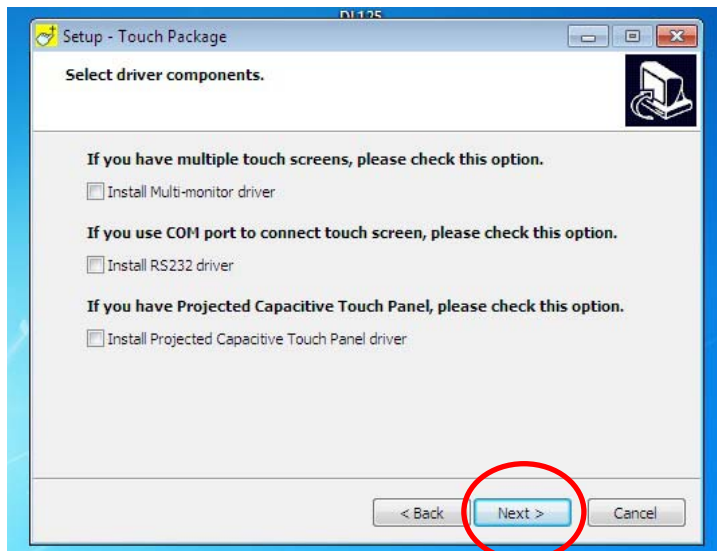


2. Click “Next”



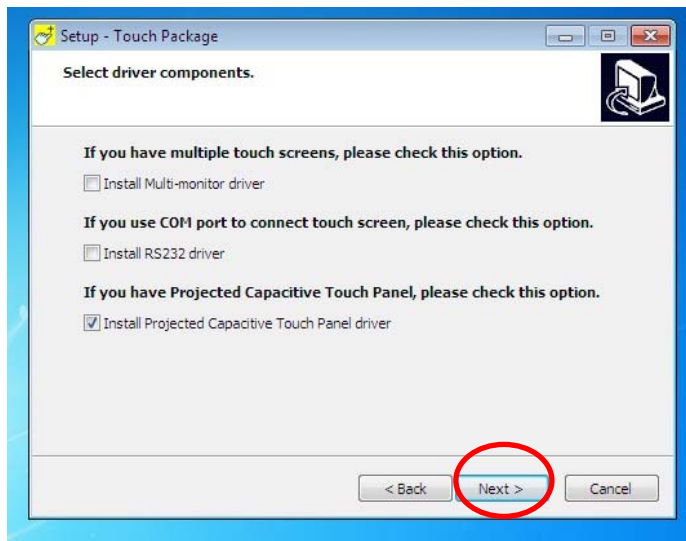
3. Resistive Touch Panel :

For USB interface or PC doesn't support multi-monitor function, please don't select.

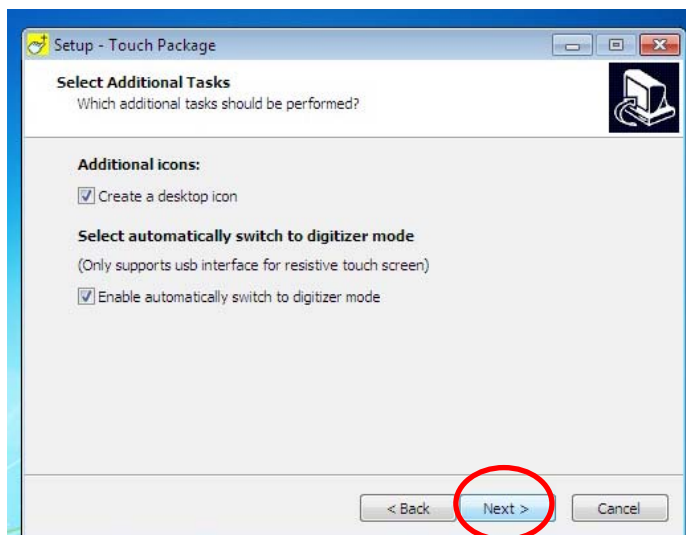


## Projected Capacitive Touch Panel :

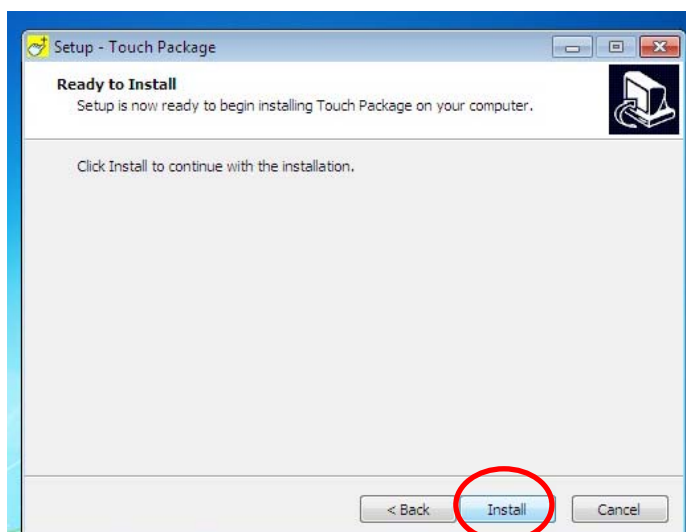
For Projected Capacitive Touch Panel, please select item 3



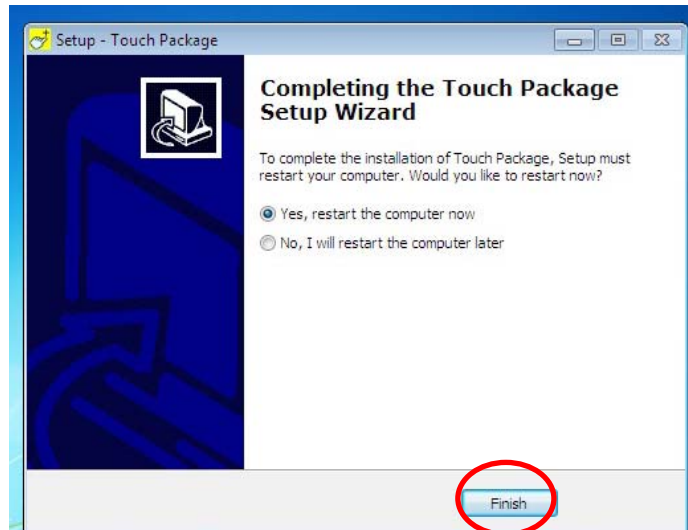
4. Click “Next”



5. Select “Install”



6. When installation is completed, please click “Finish” and reboot your PC

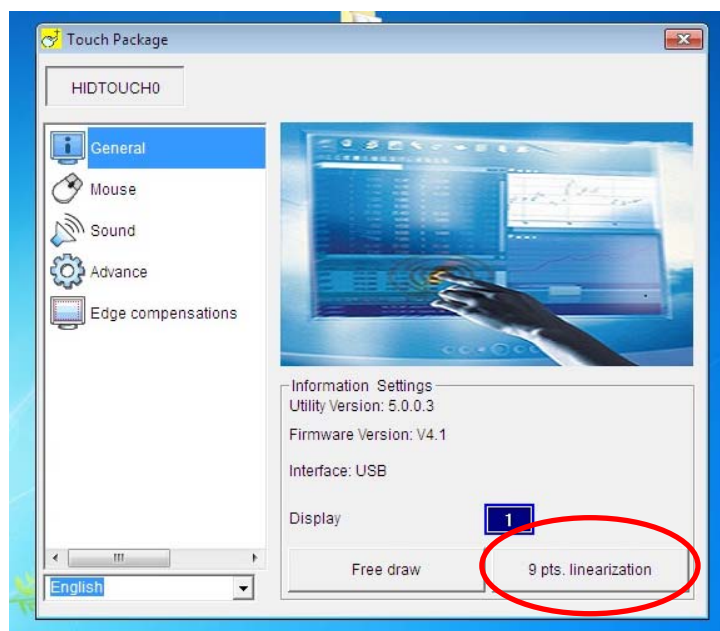


7. After rebooting PC, “Touch Tool” icon will be shown in desktop, please double click for Touch settings

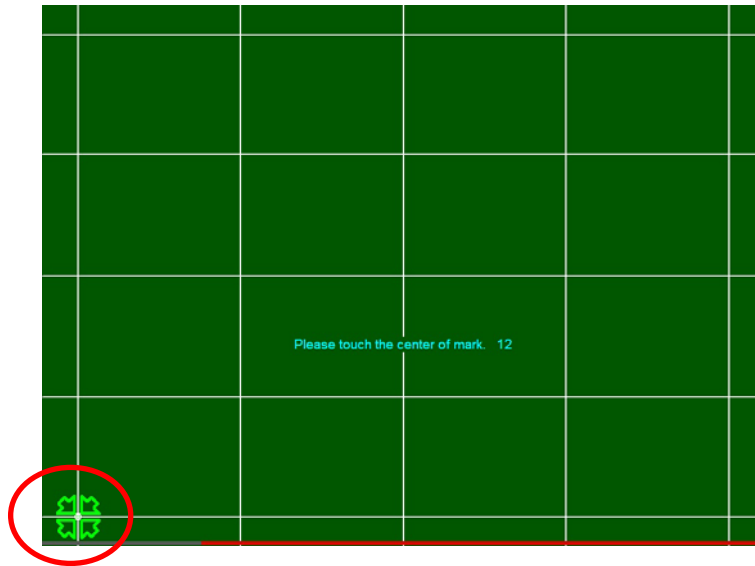


8. Setting Windows

Please select “9 Pts. linearization” calibration



9. Please follow instruction for 9 Pts. calibration



10. Please select "Save" to store installation data

